



**BIZWENI
CENTRE**
— FOR CHILDREN —
WITH DISABILITIES

Annual Report 2023 - 2024

A word from our Chairperson

It is with great pride and gratitude that I present this year's Chairperson's report for Bizweni Centre for Children with Disabilities. This past year has been both challenging and rewarding as we continue to serve children with special needs in our community. Our commitment to creating a safe, inclusive, and empowering environment for these children remains at the heart of all we do, and I am pleased to report on the progress we have made.

Over the past year, our centre has not only sustained but improved on its essential services, despite the ongoing financial and operational challenges facing many NGOs. The dedication and hard work of our staff have been instrumental in providing specialized education, therapeutic care, and holistic support to each child. Their unwavering commitment, passion, and expertise have enabled our children to thrive, develop new skills, and experience a sense of belonging that is critical for their well-being and growth.

We have also been fortunate to witness a growing wave of community support. Local businesses, volunteers, and individual donors have generously contributed through various fundraising events, donations, and partnerships, allowing us to upgrade our teaching materials, enhance our programs, provide the best services to the children in our care. This collective effort underscores the importance of our work and the shared belief in the potential of every child, regardless of their abilities.

In addition to our day-to-day operations, we have continued to strengthen our relationships with the families of the children we serve. Through regular engagement, support workshops, and family outreach programs, we aim to empower parents and caregivers, ensuring they have the tools and resources necessary to support their children's development at home.

Looking ahead, our focus will be on sustaining and growing the centre. We are actively exploring new funding opportunities, strengthening our partnerships, and developing long-term strategies that will ensure the continuity and sustainability of our programs. Our vision for the future includes raising more awareness on the topic of disabilities and expanding our services to meet the evolving needs of the community.

In closing, I would like to extend my deepest thanks to our incredible staff, volunteers, donors, and the families we serve. Your ongoing support and dedication have been invaluable in helping Bizweni Centre remain a beacon of hope and opportunity for children with disabilities. Together, we will continue to make a lasting difference in the lives of these extraordinary children.





Our Board of Governors

Guidance and Support

Ensuring ethical practice

Upholding the public's trust

Chairperson

Justus Swart

Vice Chairperson

Lwazi Mankahla

Secretary

Denise Rankin

Treasurer

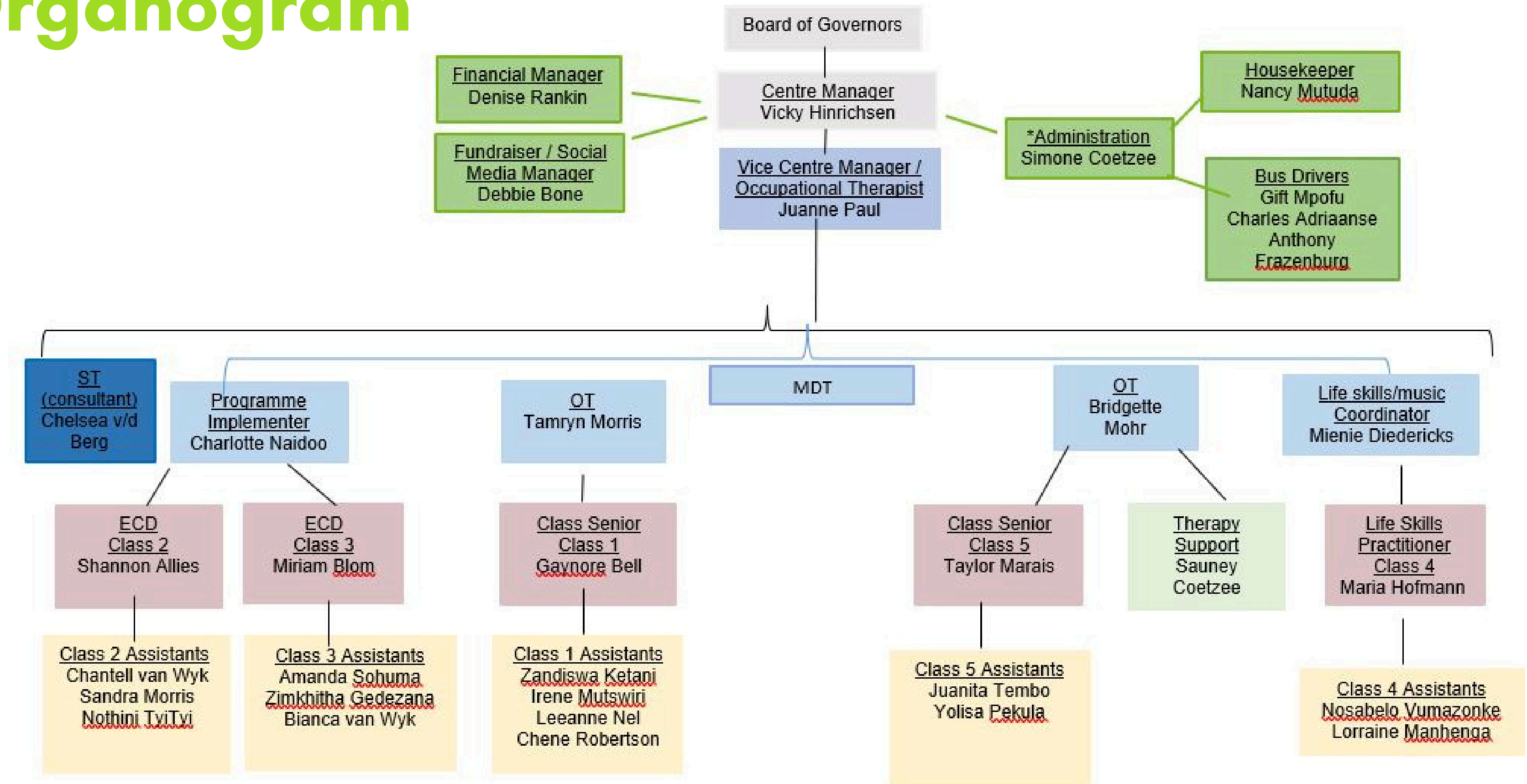
Daniel de Villiers

Additional Members

Russell Julius

Stephen Mack

Organogram



Our Team

STAFF TURNOVER OUT

Livonia Fortuin
Noluyanda Mtheli
Catherine Coetzee
Megan Stafoor

New Staff

Taylor Marais
Shannon Allies
Juanita Tembo
Helouise De Wet



Centre Manager
Vicky Hinrichsen



Therapists
Juanne Paul
Chenell Myers
Speech Therapist
Chelsea van den Berg



Administration
Simone Coetzee
Dinks Rankin
Debbie Bone



Housekeeper & Drivers
Nancy Muftuda
Gift Mpofo
Charles Adriaanse
Froancois Vogelzang



Class 1
Charlene Maswinda
Zandiswa Ketani
Irene Mutswiri
Leeanne Nell



Class 2
Caroline Moletsane
Sandra Morris
Gaynore Bell
Nothini Tyityi



Class 3
Miriam Blom
Frances Leibrandt
Amanda Sohuma



Class 4
Mienie Diedericks
Maria Hoffman
Nosabelo Vumazonke



Class 5
Taylor Marais
Yolisa Pekula
Juanita Tembo



About Bizweni Centre

Bizweni Centre for Children with Disabilities is registered as an educational day-care centre for children with severe to profound disabilities.

Vision

Equipping children with disabilities to reach their full potential.

Mission

We believe that every child with disabilities, irrespective of background, ability or circumstances should have access to education. Our aim is to provide a safe, loving environment, conducive to learning and development.

67

Children

5

Classes

33

Team members





Occupational Therapy 585

Individual Therapy Support Sessions

Wheelchair/Assistive Devices - seating/adaptions, repairs, assessment/ordering- 39
Home Wheelchair - 3 and Home Standing Frames - 1
 Bus positioning/Posture management - Daily basis
 Standing Frames - Daily basis
Medical Management Referrals/Reports - to Tygerberg Hospital, Audiology, Dietician, Social Workers, Helderberg Hospital, Rustoff ASD
 Referrals to Pebbles Oral Hygienist - 11
 Referrals to TBH Dental - 7
Development of stimulation programs for classes 1-5 as well as positioning programs

Pineland's Orthotic Centre 21

Referrals for orthotic devices and collection

Specific children are referred for manufacturing ankle-foot orthosis(AFOs) and build-up shoes. The Centre provides transport for the child and care/parent.

Additional Support
Physiotherapist consultations with Stefani - 5
Marinda Bruwer Biokineticist: visits from two interns work with 5 specific children for two terms

Mental Health Awareness
 event at HH Hospital
 promoting the Centre





Speech Language Therapy

Communication and language enrichment

Morning Ring Program

Centre-wide, classroom based: Reaching 66 children

Snack Program

Feeding is a part of Speech Therapy as it utilizes the same muscular structures and relies on communication for effective feeding. [Reaching 18 children.](#)

A hot meal is provided daily for the children.

Food Drive

Drops

21

Parcels 1254

Sadly this initiative came to an end in January 2024

Music Stimulation Program

Weekly music sessions for each class

Goals include:

- Listening skills and following instructions
- Using different instruments - bells, drums, shakers, sticks
- Build counting skills
- Waiting for your turn





Transitioning to LSEN

Providing the tools to unlock potential

The term "learners with special educational needs" (LSEN) refers to learners who need additional help and support in their learning. There are a few LSEN schools in the Helderberg area that provide specific services for children with disabilities, Rustoff LSEN, Gloria Botha School and more.

Some children when they come to the Centre show the cognitive potential to transition to other learning opportunities. Additional academic work is given to a child if they cope extremely well with the standard work. This added stimulation is to provide a strong foundation.

There are mixed emotions when a child is accepted into a school and leaves the Centre. We are extremely proud and happy for the child's achievement but of course, sad to see them go.

15
children
transitioned



Parent Support



Workshops

Themed workshops are run throughout the year to educate, and create a support network for parents/caregivers.

Parent Evenings

We share Centre updates and provide fun, interactive information sessions to strengthen our connection.

Individual Parent Meetings

One on one meetings at the Centre to include parents in the education and therapy of their child.

Communication

We strive to maintain strong communication with our children's caregivers through WhatsApp, letters and telephone.

Additional Services

Facilitation of dental referrals and appointments, Home visits where necessary.



Staff Training

Workshops & Webinars **34**



Topics ranging from:

- Makaton
- Managing Challenging Behaviour
- Fundraising
- Gross Motor in the Class
- Visual Perception
- Understanding & managing aggressive behaviour
- Bilateral integration & midline crossing
- Ethics
- Sexuality education
- Sensory systems & overload
- Toilet training
- Autism: Managing stimming
- Labour Law
- Working with hearing impairment
- Down Syndrome

Staff Well-being/
Support Sessions **3**

Staff training & Mentoring **21**



Training on:

- Feeding Refresher/Goals
- Toilet Training
- Positioning, Handling & Wheelchairs
- Cerebral Palsy
- Autism
- Anti-Harrassment Policy & Procedure
- Interaction with Parents
- Handling of CP children in the bus
- First Aid Training
- How to manage behaviours such as stimming as well as sensory overload
- Wheelchair seating
- Mentoring for presentations to peers
- Down Syndrome
- Gross and fine motor skills
- Quality of care





Wonderful Volunteers

Primary Schools

Applewood Prep School Grade 6
Beaumont Primary Grade 7 prefects

Marinda Bruwer Biokineticists

One volunteer every Tuesday for one hour
to see 5 children

Practicum/Community Hours

Alice Manyere
Thomas Munechero
Pettie Chakudungwa
Pricilla Chirovamhangu

Community volunteers

Marinda Louw Coetzee
Tamryn Lock
Daniele Lidick
Timothy Ministry Training
Fairhaven Youth

Thembaletu Development

Shania Pienaar
Lorraine Menhenga





Outings 19

Learning through experience

Our outings are chosen to incorporate the themes the children are learning about in class. Animals, plants, transport, food, life skills, community helpers and more.

Places we visited

- Apple farm
- Cheetah Outreach
- Cape Garden Centre
- Bridging Abilities Sports Day
- Bird Haven Pet Shop
- Sir Lowry's Pass Fire Station
- SA Candles Woodstock
- Sencit Old Age Home
- Lourensford Wine Estate
- Oak Valley Flower farm
- Vergelegen Wine Estate
- Sir Lowry's Pass Clinic
- FG Jacobs Transport





Fundraising

- Bounce for Bizweni - raised R3,709.23
- Fairhaven Ladies Breakfast - raised R1050 + R5000 donated
- Flower Power Paint & Sip - raised R16,136
- Make Some Noise Extravaganza - R3,960.85
- SnapScan - R777.71
- YOCO - R13,566.61

Support a Child programme

- By the end of the financial year we had 35 supporters
- Amount raised - R243,045.14
- Given Gain - R30,185.48
- Payfast - R6,411.55

MySchool
R10,036.81
over financial year



Followers
1840



Followers
392





Events

Family Fun Day

Make Some Noise Extravaganza

Christmas Party - Alexander Forbes

Staff end of year function



Financial Report



INCOME	2024	2023	change	2022	2021	2020
Trusts & Foundations	2 760 000	2 440 000	13%	2 496 862	2 168 307	1 687 662
Government funding	1 224 106	1 326 124	-8%	1 242 751	1 224 103	1 199 653
Corporate donations	496 500	475 667	4%	384 000	393 000	386 417
Individual donations	401 893	385 591	4%	315 590	319 467	362 917
School fees	457 875	469 350	-2%	363 350	346 500	447 525
Other - interest	186 584	112 410	66%	69 270	60 296	85 717
Other - bad debts recovered	765	-		2 400	-	24 000
TOTAL INCOME	5 527 723	5 209 142	6%	4 874 223	4 511 673	4 193 891
EXPENSES	2024	2023	change	2022	2021	2020
Staff costs	3 614 560	3 548 543	2%	3 216 055	2 914 431	2 833 675
Program costs	768 254	812 043	-5%	759 509	609 052	506 533
Transport	159 426	182 459	-13%	155 549	246 635	210 775
Food & nappies	437 876	440 353	-1%	346 813	176 630	156 177
Education	170 952	189 231	-10%	257 146	185 787	139 582
Administration costs	588 425	739 342	-20%	646 731	670 631	462 707
Office and administrative	588 425	739 342	-20%	646 731	670 631	462 707
TOTAL EXPENSES	4 971 238	5 099 928	-3%	4 622 294	4 194 114	3 802 915
Depreciation	395 667	832 212	-52%	422 017	224 808	209 015
NET INCOME / (LOSS)	160 818	-722 998		-170 089	92 751	181 961
Sustainability cover	5,2	5,7	months	6,6	6,0	5,4

Staff costs	3 614 560	3 548 543		3 216 055	2 914 431	2 833 675
Program costs	768 254	812 043		759 509	609 052	506 533
Administration costs	588 425	739 342		646 731	670 631	462 707
TOTAL EXPENSES	4 971 238	5 099 928		4 622 294	4 194 114	3 802 915
per month	414 270	424 994		385 191	349 509	316 910

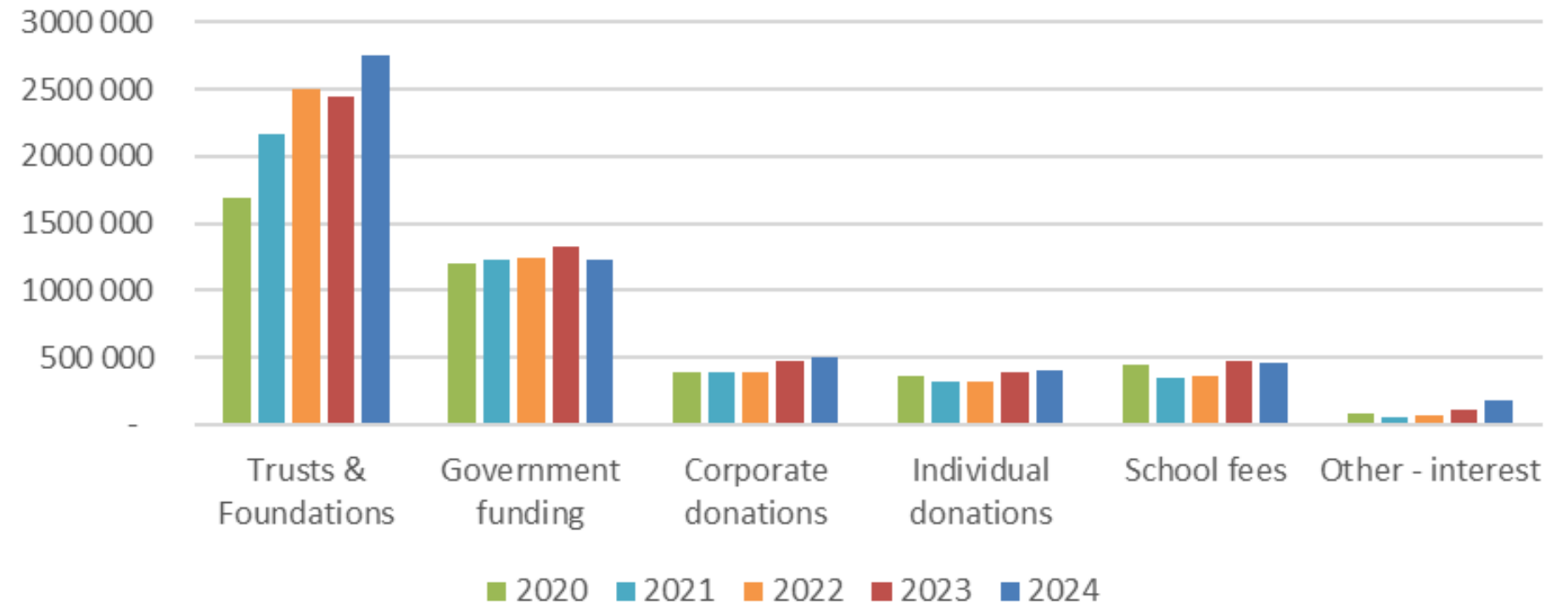


2024 Income

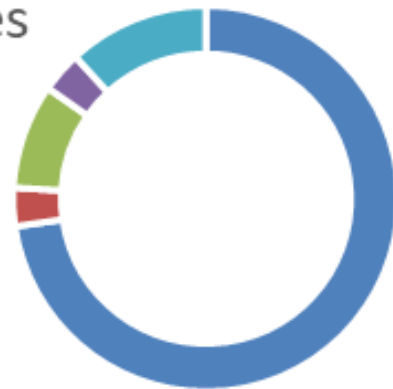


- Trusts & Foundations
- Government funding
- Corporate donations
- Individual donations
- School fees
- Other - interest

Total income

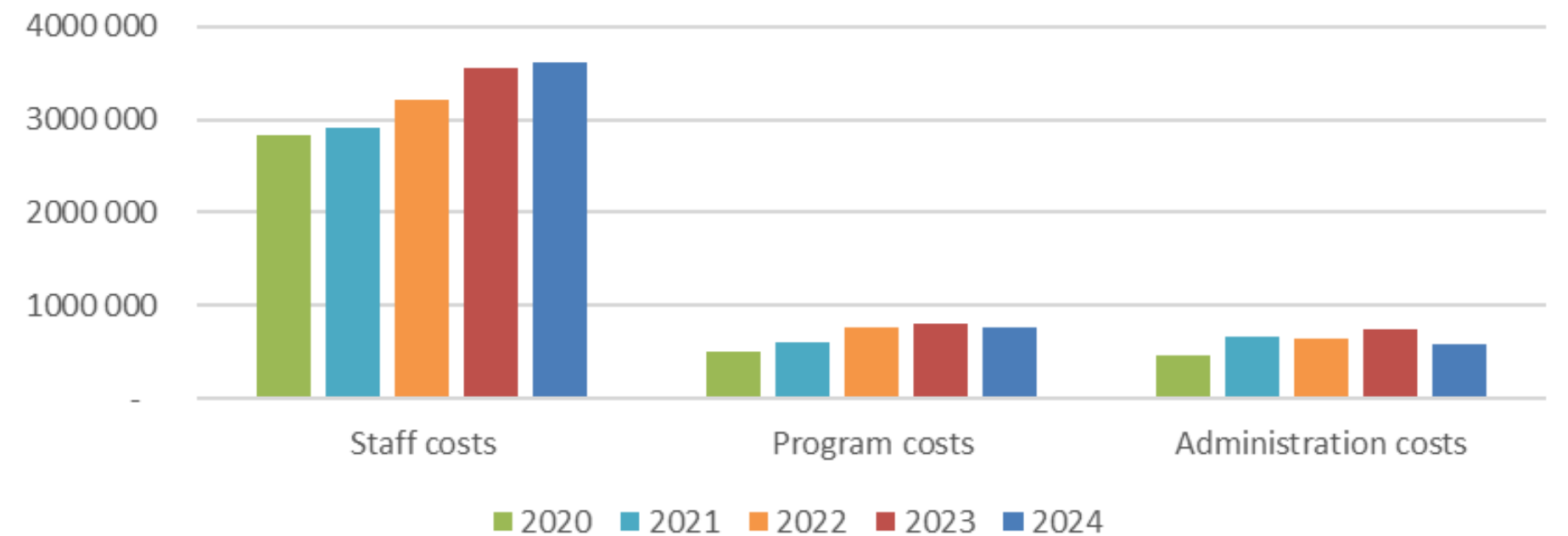


2024 Expenses



- Staff costs
- Food & nappies
- Office and administrative
- Transport
- Education

Total costs



Finance report - financial year ended 29 February 2024

Bizweni Centre is registered as an NPO, measuring itself against best practice in terms of governance for its sector. The financial statements are audited by an independent auditor, who expressed an unqualified opinion.

Once again, the Board is pleased to present a healthy set of financial statements. These include a balance sheet, showing the financial position at a point in time and an income statement, which records operating activities for the financial year ended on 29 February 2024.

The **Income Statement** shows a net profit of R161k from operations, which generated **Income** at R5,5m, less **Operating expenses** at R4.9m resulting in an operating income of R556k before Depreciation.

- **Donations** remain the key source of funding, with 50% being sourced from Trusts & Foundations. Government funding represents 22% of income, with the remainder being sourced by private donors and school fees. These collective contributions keep Bizweni functioning and every donation matters.
- **Staff costs** represent 73% of total running expenses for the centre. There is a staff complement around 32, who care for 66 children. The livelihood of the staff is dependent upon the financial sustainability of the centre. Staff need to be suitably trained, developed and remunerated to be effective. The Board are committed to provide market related packages within financial constraints. Total staff costs were 2% up on prior year.
- **Program costs** represented 15% of total costs and reduced mainly due to the end of the successful food drive, which was sponsored by a funder.
- **Office and administrative** expenses represent 12% of total costs and decreased during the year.

The **Balance Sheet** remains healthy:

- **Capital and reserves** have increased from R2.8m, which is up due to the surplus reported in the income statement.
- The **Bank** balance at year end is R3.5m; which is positive. This balance includes R1,2m income received in advance, which represents donor funding received and allocated for use in the next financial year. The Sustainability fund of R950k is also included, which is intended to reduce risk, should donor funding commitments change. This covers the operations for 5 month's expenses.
- **Net assets** materially comprise three buses, which transport the children.
- Also reflected in the notes is an Operating Lease commitment, being the non-cancellable operating lease over the building from the church. Both these categories of assets are critical to the future of the centre.

In summary, the centre generated a 6% increase in funding and reduced its operating costs, resulted in a profit for the year. Bizweni is grateful for the funding which is faithfully provided and continues to strive to ensure the sustainability of the Centre.





Donations in Kind

Our caring community

Tuschemy

Kim Fitt

Mr Cloete & Mr Visser

Applewood Preparatory

Gisela Zoutendyk

Timothy Taylor

Elmarie Fowlds

Stephan Mack

Ackermans

Bridgewater Manor Craft Group

Footsteps Ladies Walking Group

Highland Farms

Be Graceful Dance Studio

Helderberg Rotary Anns

Lily De Villiers

Lindi Henderson

Tom Botha

Jeanine van Tander

Gwen Rankin

Jeanine Garner

Lisa Uys

Tammy - Garden Angel

Teena Fox

Cheryl Micheletti

Marilyn Norton

Care Protect Invest SA

SAND

Alexander Forbes

Girl Guides

Joke' Young

Mark Davies

Gaye Gordon

Mark Davies

Adele & Riaan Breedt

Desiree & Mark Struwig

Carol Mackay

Suzie Hasselman





Thank You

To the people who make it all possible

R1,000,000+

Dept. of Social Development

R600,000 - R1,000,000

Molteno Brothers

476 Charitable Trust

R200,000-R599,000

Jannie Mouton Foundation

Elma Foundation

Alexander Forbes

RB Hagart

NBP Charitable Foundation

R100,000 - R199,000

R20,000 - R99,000

Helderberg Rotary Club

Power Construction

Syringa Trust

Dr Mark Abelson

SUPPORT A CHILD

Virtual Resource

Tim Bertram

Nina Brag Pettersson

Greg & Terese Bertram

Blanche Assam

Allan Bellamy

Beulah & Riaan Sinden

Margaret Murray

Hewat Dale Kuys

Hazel Swart

Barbara Kingwill

Annalisa Zeuch

Frank & Marianne Minderhoud

Carla & Kevin Mcpherson

Jean De Beer

Stekhoven

Ricci & Lloyd Marshall

Rhett Lothar Rohloff

Wendy Bone

Cape Patio

Paul Hartmann

Sabine von der Haar

Carlotta Nessen

Cheryl Micheletti

Astrid Eager

Hanel & Schalk Van Reenen

Romana Beardmore

Ian McGaw

Dan Forsyth

Marina Brooks

Elmarie Burnett

Donia Kamstra

Heldertech Printers

Vicky Michael



Thank You

Given Gain Platform

Mignon van Vorselen
Diana Thomas
Peter Green
Marelize Matthee
Lizl Hobson
Doug Retief
Gustav Brink
Glynnis Byron
Hanlie Booyens
Martin Lombardi
Lelani Wagner
Suzi Van Der Merwe
Christopher Van Rooyen
Birgit Mann
Megan Lombardi
Michelle Lombardi
LBB Crookes

Donors

Melanie Panteli
Shane Beardmore
Fairhaven Congregation
Beaumont Primary School

We
couldn't do
what we do
without
YOU





Contact Us



Bizweni Campus, Bizweni Avenue, Somerset West, 7130



021 851 6645



bizweni@bizwenicentre.co.za

www.bizwenicentre.co.za

NPO 175- 297 PBO 930055534



Bizweni Centre for Children with Disabilities

Annual Report 2023 - 2024